

ProPac™ PA1
Analytical (4 x 250 mm)
Product No. 039658

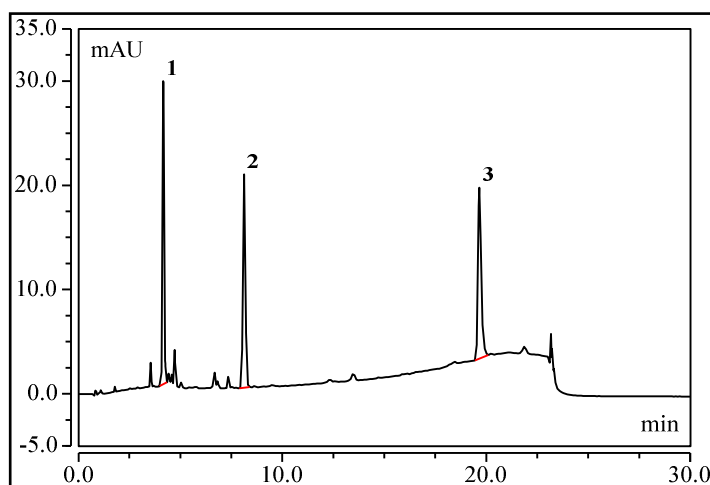
Date: 13-May-22 11:51
Serial No. : 004464
Lot No. : 02209020

Flow Rate: 1.50 mL/min
Temperature: Ambient Temperature
Detection: Absorbance Detection
@ 280 nm
Standard: 3.0 mMol Angiotensin II
5.6 nMol Met-Enkephalin
3.2 nMol Oxidized A-Chain of
Insulin in 50 µL H₂O
Injection Volume: 50 µL
Storage Solution: 100 mM Trizma Base

Eluent:
%A: Deionized Water
%B: 100 mM Trizma Base
%C: 1.0 M NaCl

Eluent Profile

Time	%A	%B	%C	Comment
-38.00	79	20	1	
-33.00	0	20	80	Column Wash
-28.00	79	20	1	
-23.00	0	20	80	Column Wash
-18.00	79	20	1	
-13.00	0	20	80	Column Wash
-8.00	79	20	1	Equilibration
-0.40	79	20	1	Load Sample
0.00	79	20	1	Inject
20.00	0	20	80	Ramp
22.00	0	20	80	Hold in 2 min.
22.10	79	20	1	
30.00	79	20	1	



No.	Peak Name	Ret.Time (min)	Asymmetry (AIA)	Resolution (EP)	Efficiency (EP)	Concentration
1	Angiotensin II	4.2	1.1	21.01	12618	3.0
2	Met Enkephalin	8.1	1.2	44.56	19964	3.0
3	Insulin A-Chain	19.7	1.6	n.a.	74068	3.2

QA Results:

Analyte	Parameter	Specification	Results
Insulin A-Chain	Efficiency	>=40500	Passed
Insulin A-Chain	Retention Time	18.5-20.4	Passed
Met Enkephalin	Efficiency	>=15210	Passed
	Pressure	<=2200	1869

Production Reference:

Datasource: Archive7-Con-22
Directory: Resin7\ProPac_MabPac\PP_PA1
Sequence: RQ_Ltx Val.-PP_PA1_4x250mm_AK-3-29-22
Sample No.: 30

7.2.10.26383

Chromeleon™ Thermo Fisher Scientific

067184-02 (QAR)

[thermoscientific.com/dionex](https://www.thermoscientific.com/dionex)

© 2018 Thermo Fisher Scientific Inc. All rights reserved. All trademarks are the property of Thermo Fisher Scientific and its subsidiaries. Specifications, terms and pricing are subject to change. Not all products are available in all countries. Please consult your local sales representative for details.

XX21155-EN 0215S 031298-11

Thermo Fisher Scientific
1228 Titan Way
P.O. Box 3603
Sunnyvale, CA 94088-3603
(408) 737-0700



Thermo Fisher Scientific,
Sunnyvale, CA USA is
ISO 9001 Certified.

thermo
scientific